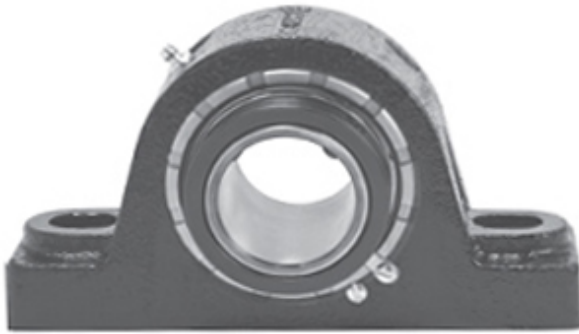




# REXNORD BEARING LIMITED

3.438 Inch | 87.325 Millimeter x 5.313 Inch |  
134.95 Millimeter x 3.75 Inch | 95.25 Millimeter  
REXNORD ZAS5307 Pillow Block Bearings



ZAS5307 Bearing 2D drawings and 3D CAD models

Bearing No. ZAS5307

|                           |   |
|---------------------------|---|
| Category                  | Pillow Block Bearings   |
| Inventory                 | 0.0   |
| Manufacturer Name         | REXNORD   |
| Minimum Buy Quantity      | N/A   |
| Weight                    | 19.3  |
| EAN                       | 0698210017569   |
| Product Group             | M06288  |
| Number of Mounting Holes  | 2   |
| Mounting Method           | Concentric Collar   |
| Housing Style             | 2 Bolt Pillow Block   |
| Rolling Element           | Spherical Roller Bearing  |
| Housing Material          | Cast Iron   |
| Expansion / Non-expansion | Expansion   |
| Mounting Bolts            | 7/8 Inch  |
| Relubricatable            | Yes   |
| Insert Part Number        | 5307U   |
| Seals                     | Clearance Seal  |
| Housing Configuration     | 1 Piece Solid   |
| Inch - Metric             | Inch  |
| Other Features            | Double Row   Double Collar   With Set Screw   |
| Long Description          | 2 Bolt Pillow Block; 3-7/16" Bore; 3-3/4" Base to Center Height; Concentric Collar Mount; Spherical Roller Bearing; Relubricatable; |



## REXNORD BEARING LIMITED

|                               |   |
|-------------------------------|---|
|                               | Cast Iron; Clearance Seal;<br>Expansion                     |
| Category                      | Pillow Block  |
| UNSPSC                        | 31171511  |
| Harmonized Tariff Code        | 8483.20.40.80   |
| Noun                          | Bearing   |
| Keyword String                | Pillow Block  |
| Manufacturer URL              | <a href="http://www.rexnord.com">http://www.rexnord.com</a> |
| Manufacturer Item Number      | ZAS5307   |
| Manufacturer Internal Number  | 6801756   |
| Weight / LBS                  | 42.5  |
| D                             | 5.313 Inch   134.95<br>Millimeter                           |
| Nominal Bolt Center to Center | 10 Inch   254 Millimeter                                    |
| Actual Bolt Center to Center  | 10 Inch   254 Millimeter                                    |
| B                             | 3.75 Inch   95.25 Millimeter                                |
| d                             | 3.438 Inch   87.325<br>Millimeter                           |
| Bolt Spacing Maximum          | 0 Inch   0 Millimeter                                       |
| Bolt Spacing Minimum          | 0 Inch   0 Millimeter                                       |