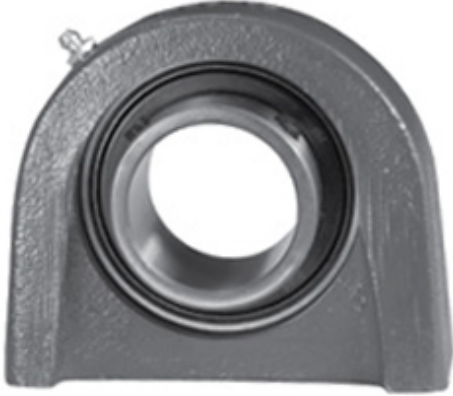




REXNORD BEARING LIMITED



PT3S224EK75 Bearing 2D drawings and 3D CAD models

1.5 Inch | 38.1 Millimeter x 1.656 Inch | 42.06 Millimeter x 1.938 Inch | 49.225 Millimeter LINK BELT PT3S224EK75 Pillow Block Bearings

Bearing No. PT3S224EK75

Category	Pillow Block Bearings
Inventory	0.0
Manufacturer Name	REXNORD
Minimum Buy Quantity	N/A
Weight	1.671
EAN	0662864009478
Product Group	M06110
Number of Mounting Holes	2
Mounting Method	Set Screw
Housing Style	2 Bolt Tap Base Pillow Block
Rolling Element	Ball Bearing
Housing Material	Nickel Coated Cast Iron
Expansion / Non-expansion	Non-expansion
Mounting Bolts	1/2 Inch
Relubricatable	Yes
Insert Part Number	MB251-12-PA
Seals	Single Lip Contact
Housing Configuration	1 Piece Solid
Inch - Metric	Inch
Other Features	Single Row Standard Duty Corrosion Resistant Duty Has Flinger
Long Description	2 Bolt Tap Base Pillow Block; 1-1/2" Bore; 1-15/16" Base to Center Height; Set Screw Mount; Ball Bearing;



REXNORD BEARING LIMITED

	Relubricatable; Nickel Coated Cast Iron; Single Lip Contact; Non-expansion
Category	Pillow Block
UNSPSC	31171511
Harmonized Tariff Code	8483.20.40.40
Noun	Bearing
Keyword String	Pillow Block
Manufacturer URL	http://www.rexnord.com
Manufacturer Item Number	NTBC251-12
Manufacturer Internal Number	5803933
Weight / LBS	3.68
Bolt Spacing Maximum	0 Inch 0Millimeter
Actual Bolt Center to Center	3.5 Inch 90Millimeter
d	1.5 Inch 38.1 Millimeter
Bolt Spacing Minimum	0 Inch 0Millimeter
B	1.938 Inch 49.225 Millimeter
D	1.656 Inch 42.06 Millimeter
Nominal Bolt Center to Center	3.5 Inch 90 Millimeter