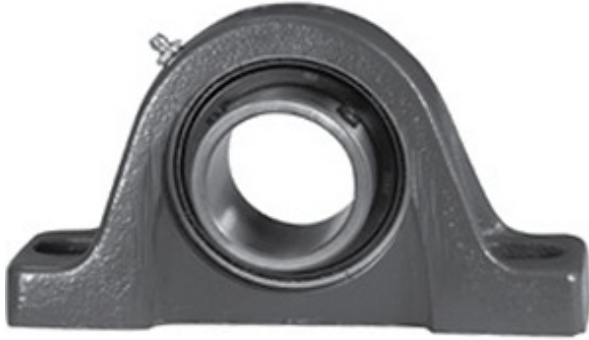




REXNORD BEARING LIMITED

2.25 Inch | 57.15 Millimeter x 1.813 Inch | 46.05 Millimeter x 2.438 Inch | 61.925 Millimeter LINK BELT PL3S2E36E Pillow Block Bearings



PL3S2E36E Bearing 2D drawings and 3D CAD models

Bearing No. PL3S2E36E

Category	Pillow Block Bearings
Inventory	0.0
Manufacturer Name	REXNORD
Minimum Buy Quantity	N/A
Weight	3.27
EAN	0662864012096
Product Group	M06110
Number of Mounting Holes	2
Mounting Method	Set Screw
Housing Style	2 Bolt Pillow Block
Rolling Element	Ball Bearing
Housing Material	Cast Iron
Expansion / Non-expansion	Non-expansion
Mounting Bolts	5/8 Inch
Relubricatable	Yes
Insert Part Number	MB252-14-PA
Seals	Single Lip Contact
Housing Configuration	1 Piece Solid
Inch - Metric	Inch
Other Features	Single Row Standard Duty Has Flinger
Long Description	2 Bolt Pillow Block; 2-1/4" Bore; 2-7/16" Base to Center Height; Set Screw Mount; Ball Bearing; 6-5/16" Minimum Bolt Spacing;



REXNORD BEARING LIMITED

	7-1/2" Bolt Spacing Maximum; Relubricatable; Cast Iron
Category	Pillow Block
UNSPSC	31171511
Harmonized Tariff Code	8483.20.40.40
Noun	Bearing
Keyword String	Pillow Block
Manufacturer URL	http://www.rexnord.com
Manufacturer Item Number	CL252-14
Manufacturer Internal Number	5804374
Weight / LBS	7.21
Nominal Bolt Center to Center	6.9 Inch 175.3 Millimeter
Actual Bolt Center to Center	0 Inch 0Millimeter
D	1.813 Inch 46.05 Millimeter
d	2.25 Inch 57.15 Millimeter
Bolt Spacing Minimum	6.313 Inch 160.35Millimeter
Bolt Spacing Maximum	7.5 Inch 190.5Millimeter
B	2.438 Inch 61.925 Millimeter