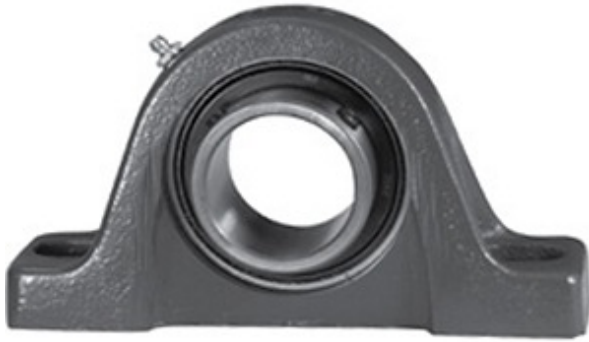




REXNORD BEARING LIMITED

2 Inch | 50.8 Millimeter x 1.813 Inch | 46.05
Millimeter x 2.438 Inch | 61.925 Millimeter LINK
BELT PL3S232E Pillow Block Bearings



PL3S232E Bearing 2D drawings and 3D CAD models

Bearing No. PL3S232E

Category	Pillow Block Bearings
Inventory	0.0
Manufacturer Name	REXNORD
Minimum Buy Quantity	N/A
Weight	3.46
EAN	0662864012027
Product Group	M06110
Number of Mounting Holes	2
Mounting Method	Set Screw
Housing Style	2 Bolt Pillow Block
Rolling Element	Ball Bearing
Housing Material	Cast Iron
Expansion / Non-expansion	Non-expansion
Mounting Bolts	5/8 Inch
Relubricatable	Yes
Insert Part Number	MB252L-PA
Seals	Single Lip Contact
Housing Configuration	1 Piece Solid
Inch - Metric	Inch
Other Features	Single Row Standard Duty Has Flinger
Long Description	2 Bolt Pillow Block; 2" Bore; 2-7/16" Base to Center Height; Set Screw Mount; Ball Bearing; 6-5/16" Minimum Bolt Spacing;



REXNORD BEARING LIMITED

	7-1/2" Bolt Spacing Maximum; Relubricatable; Cast Iron; Si
Category	Pillow Block
UNSPSC	31171511
Harmonized Tariff Code	8483.20.40.40
Noun	Bearing
Keyword String	Pillow Block
Manufacturer URL	http://www.rexnord.com
Manufacturer Item Number	CL252L
Manufacturer Internal Number	5804364
Weight / LBS	7.61
Actual Bolt Center to Center	0 Inch 0Millimeter
B	2.438 Inch 61.925 Millimeter
d	2 Inch 50.8 Millimeter
Nominal Bolt Center to Center	6.9 Inch 175.3 Millimeter
Bolt Spacing Minimum	6.313 Inch 160.35Millimeter
Bolt Spacing Maximum	7.5 Inch 190.5Millimeter
D	1.813 Inch 46.05 Millimeter